
Medical Cannabis Dispensary Public Workshop

Robert Livermore Community Center
Wednesday June 21, 2017, 7:00 p.m.

Paul Spence, Community Development Director
Michael Harris, Police Chief
Jason Alcala, City Attorney
Scott Lee, Principal Planner
Ashley McBride, Assistant Planner

Workshop Agenda

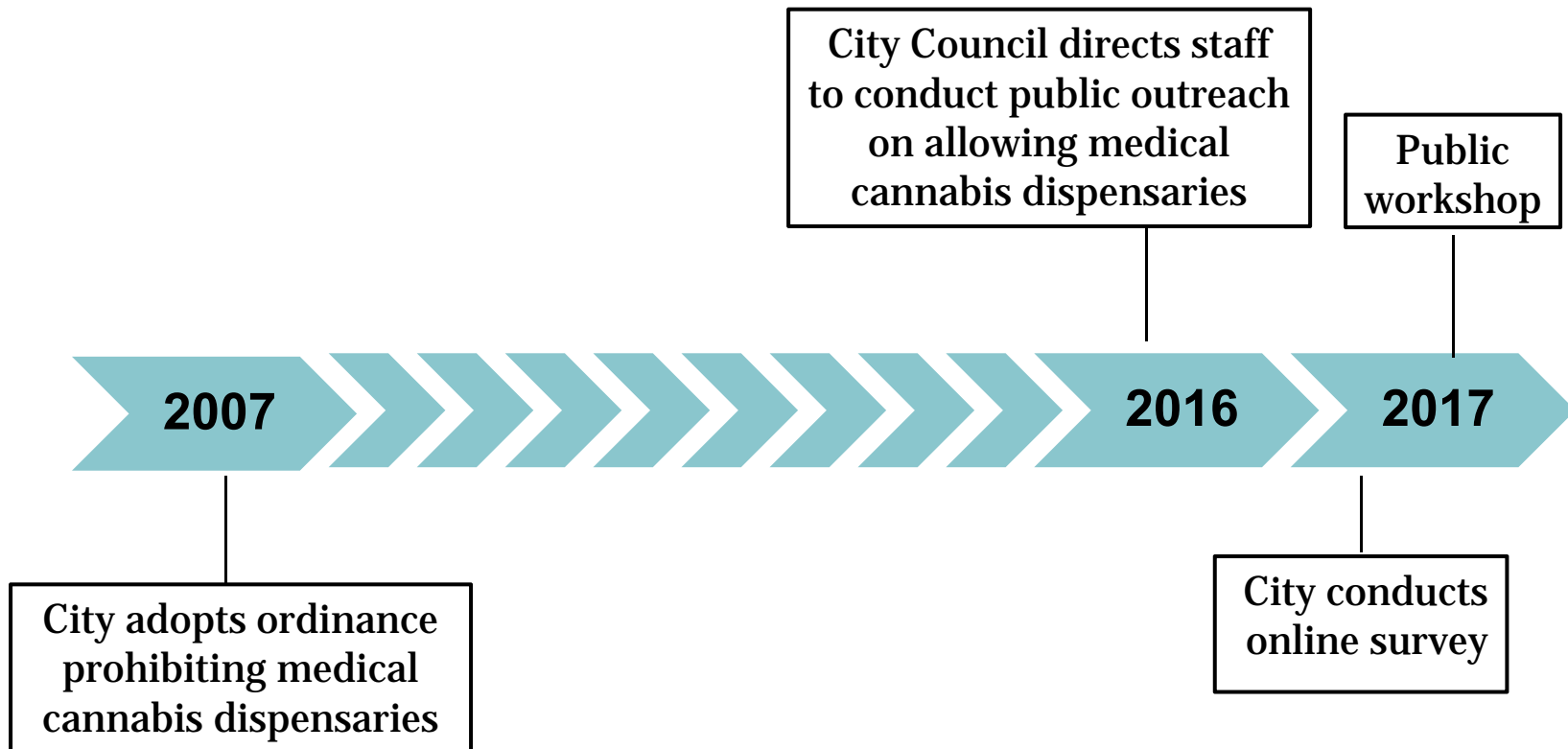
- a. Medical cannabis dispensary laws
- b. City ordinance and amendment process
- c. Medical cannabis dispensaries in the Bay Area
- d. Alameda County cannabis ordinance
- e. City's online survey results
- f. Questions
- g. Roundtable discussions
- h. Interactive boards
- i. Next steps

Cannabis Law

Level	Law
Federal	<ul style="list-style-type: none">• 1970: Controlled Substances Act (CSA) —Prohibits the possession, use, buying, selling, or cultivation of marijuana
State	<ul style="list-style-type: none">• 1996: Prop. 215—Legalized medical marijuana in CA (Compassionate Use Act)• 2003: Medical Marijuana Program Act• 2015: Medical Cannabis Regulation & Safety Act (MCRSA)• 2016: Prop. 64—Legalized nonmedical marijuana in CA (Adult Use of Marijuana Act)
Local	<ul style="list-style-type: none">• 2007: Municipal Code Section 5.80.020— Prohibits medical marijuana dispensaries in Livermore• 2016: Municipal Code Section 5.90.020— Prohibits commercial cultivation of marijuana

Medical Cannabis Dispensary Ordinance

City actions to date



Medical Cannabis Dispensary Ordinance

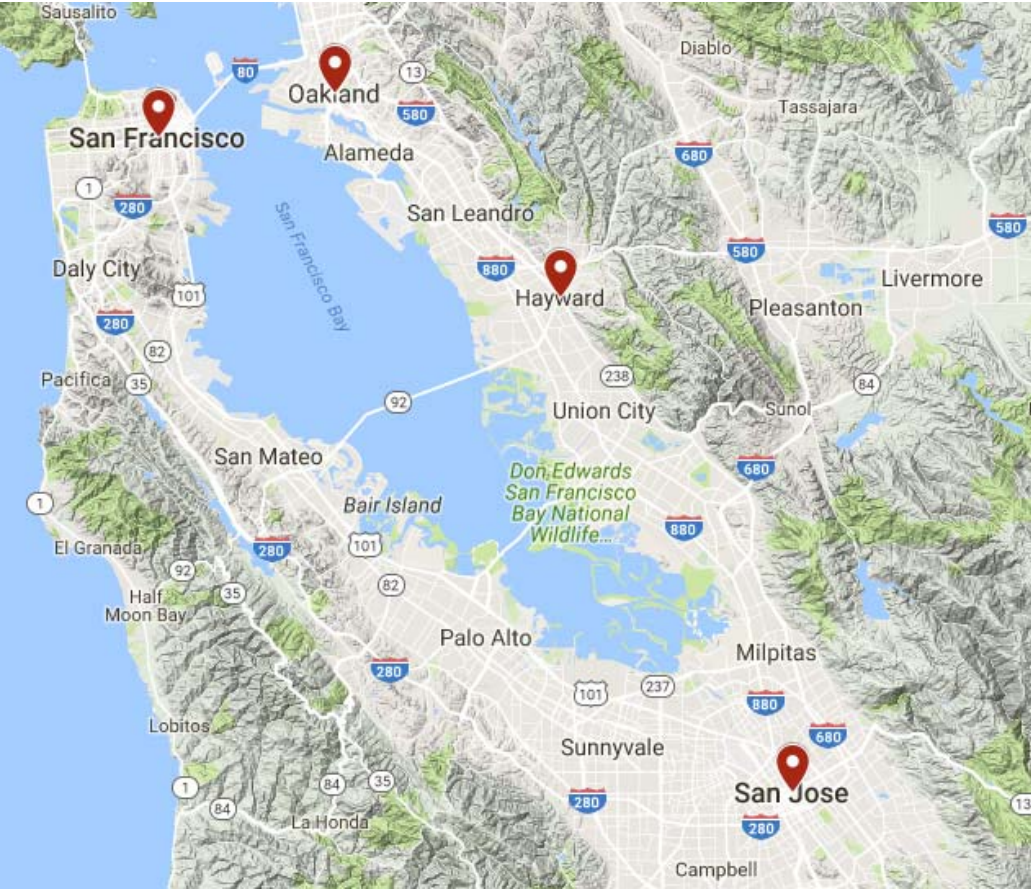
Next Steps

City Council Review- Fall 2017:

- ☐ City staff presents public outreach results
- ☐ City Council decision options:
 - 1) maintain current ordinance or
 - 2) direct staff to initiate amendment

If City Council directs staff to amend the ordinance:

- ☐ Public hearings- Planning Commission and City Council
- ☐ Approximate 3-4 month timeframe
- ☐ Ordinance amendment in effect early 2018

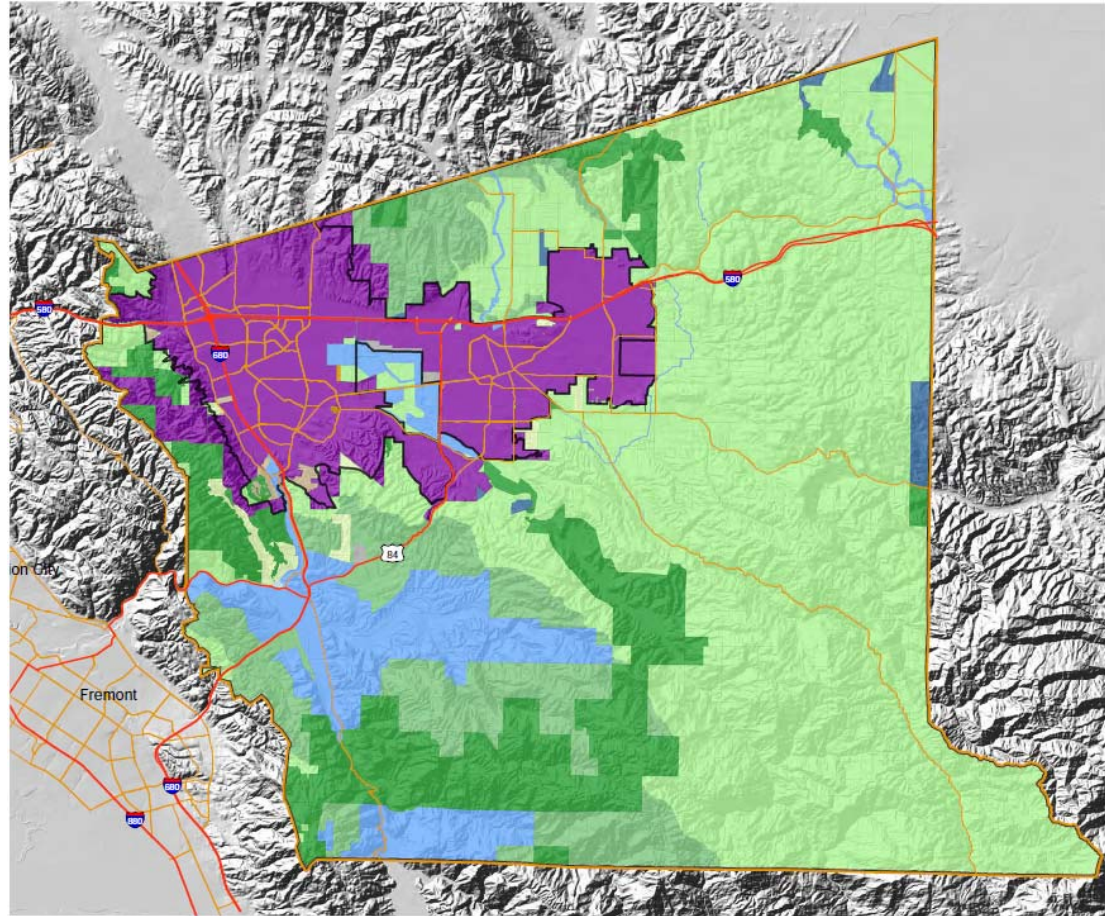


Cannabis ordinances in the Bay Area

Jurisdiction	Medical Cannabis Permitted	Recreational Cannabis Permitted	Cultivation Permitted	Medical Delivery Services Permitted
San Francisco	✓	In progress	✓	✓
Alameda County	Amendment in progress	✗	Amendment in progress	Amendment in progress
Oakland	✓	✗	✓	✓
Hayward	Outreach in progress	Outreach in progress	Outreach in progress	Outreach in progress
San José	✓	✗	✓	✓
Dublin, Pleasanton, San Ramon	✗	✗	✗	✗

Alameda County Cannabis Ordinance

- Medical Cannabis Dispensaries and Cultivation ordinance
- Two new dispensaries in East County
- Board of Supervisors decision on the ordinance anticipated August 2017



Potential Regulations

- Permit requirements for the dispensary (Conditional Use Permit, operating license, State license)
- Location requirements (distance between permitted dispensaries, restrict location to the I-3 zoning district on the east side of the city)
- Buffers from sensitive uses (1,000-foot separation from residential zones, schools, parks, churches, and private recreational uses)
- Require a security plan (background checks, security guard on the premises, surveillance cameras, lighting, alarms, etc.)

Potential Regulations

- A description of products to be sold or dispensed by the dispensary, including labeling ingredients and cannabis strength
- Limit the number of dispensaries
- Limit dispensary size and/or quantity of cannabis products
- Limit the quantity of cannabis products purchased per customer per month
- Limit the hours of operation

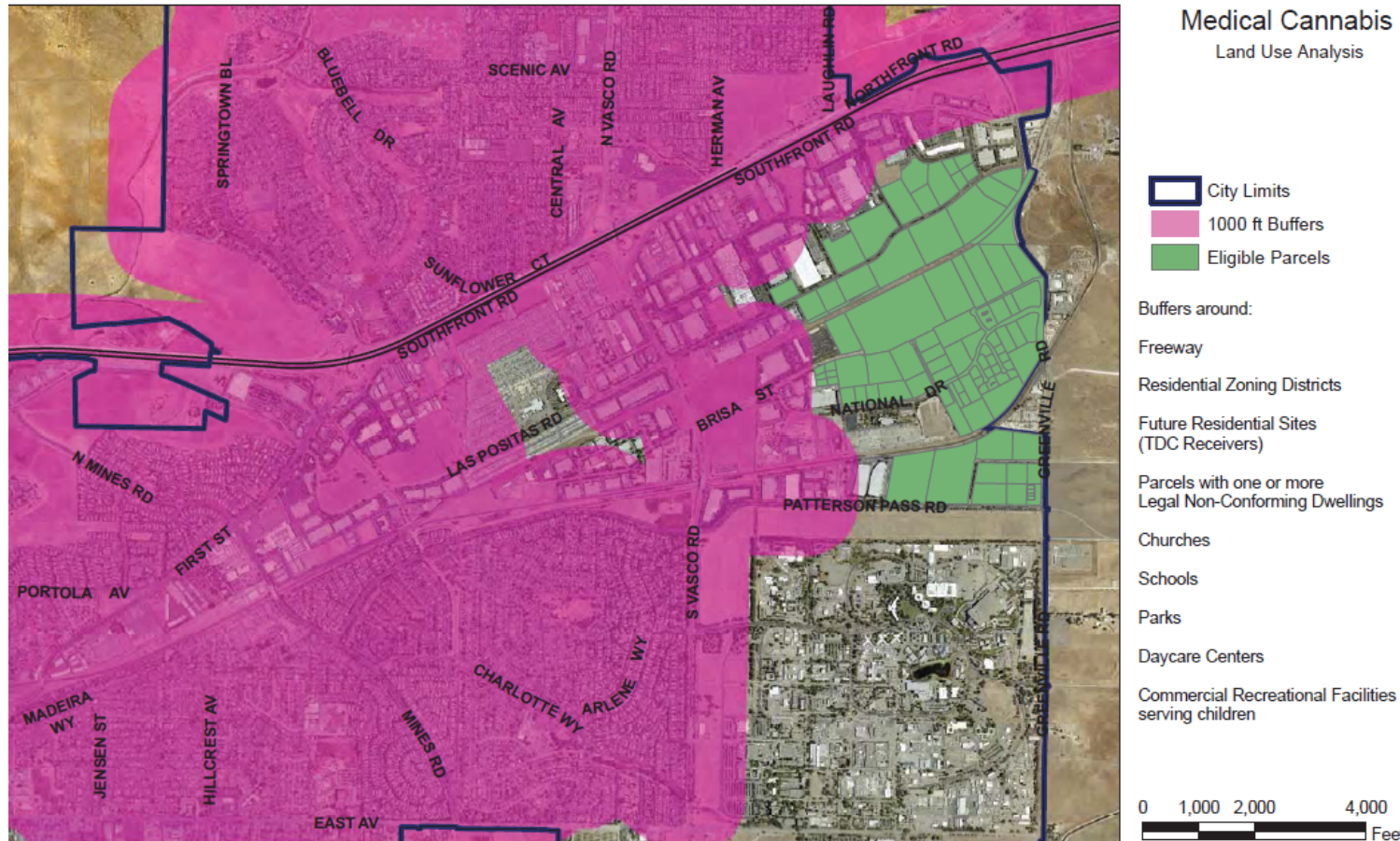
Potential Regulations

- Restrict deliveries from the dispensary
- Limit the hours of delivery
- Require dispensary to check identification and prescription for each customer
- Require record-keeping of persons receiving cannabis from the dispensary
- Require all cannabis products to be contained in child-resistant packages

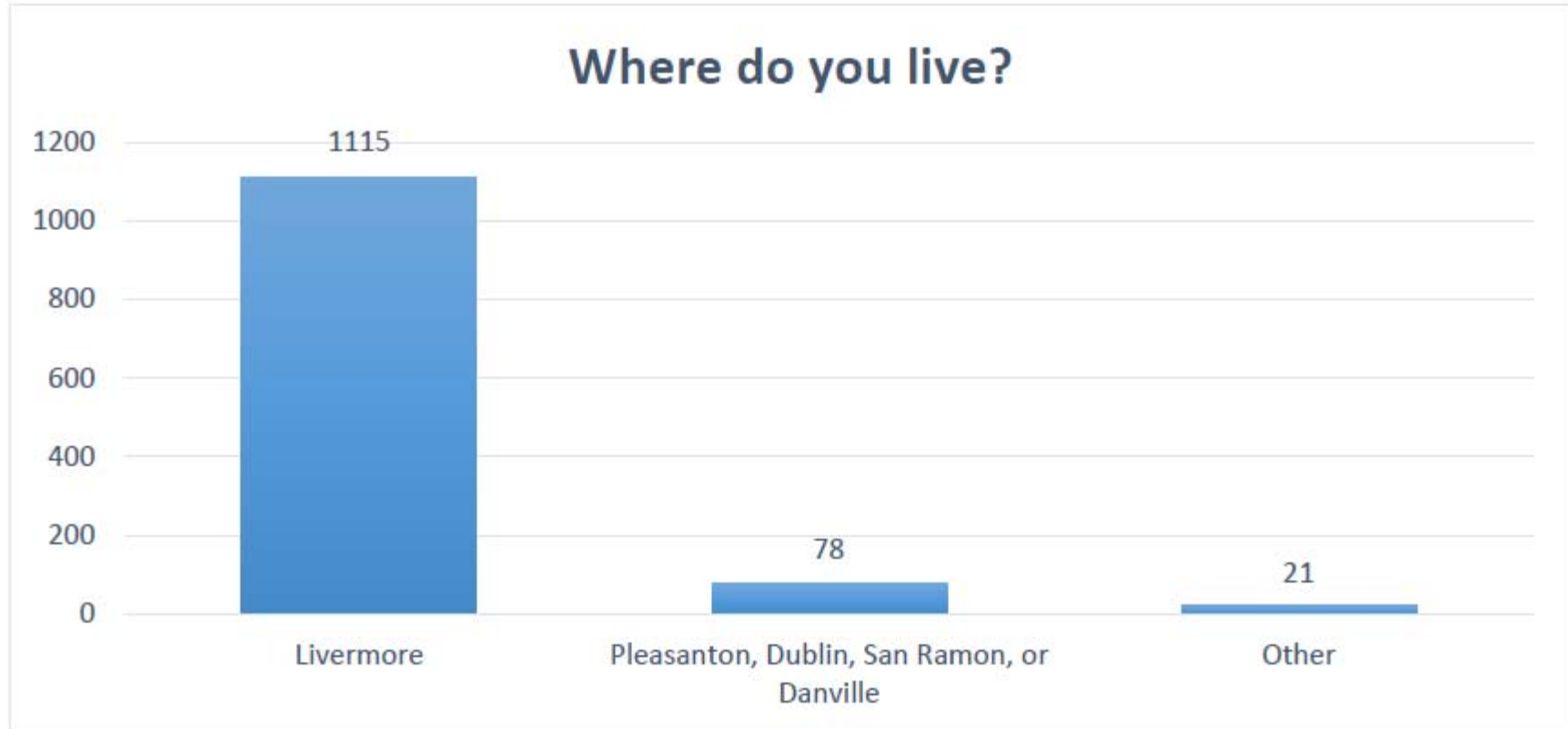
Potential Regulations

- Prohibit cannabis consumption on the premises
- Special fee for dispensaries
- Require the dispensary to provide educational materials and instruction on the safe use of medical cannabis to customers
- Control odors emanating from the dispensary

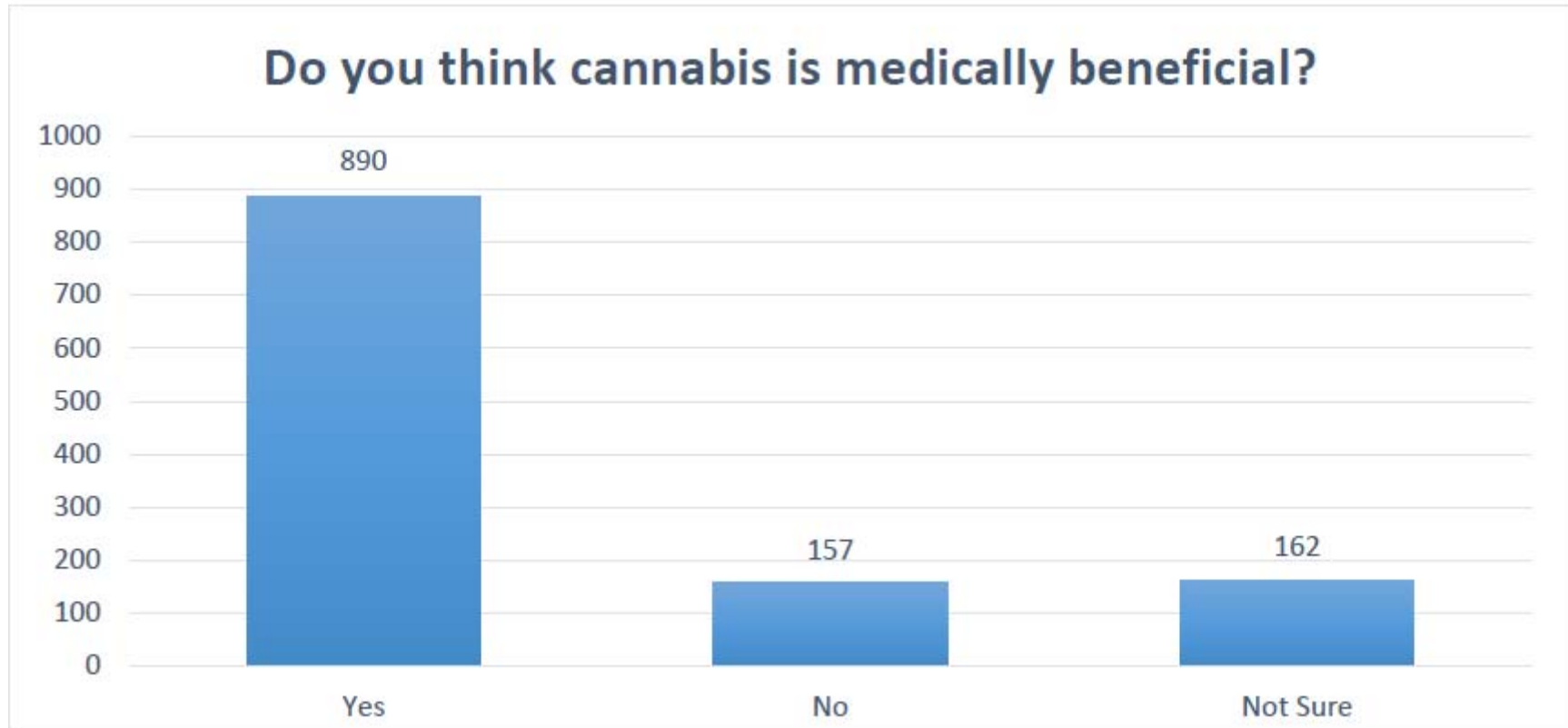
Potential Regulations: Location *Heavy Industrial (I-3) Zoning District*



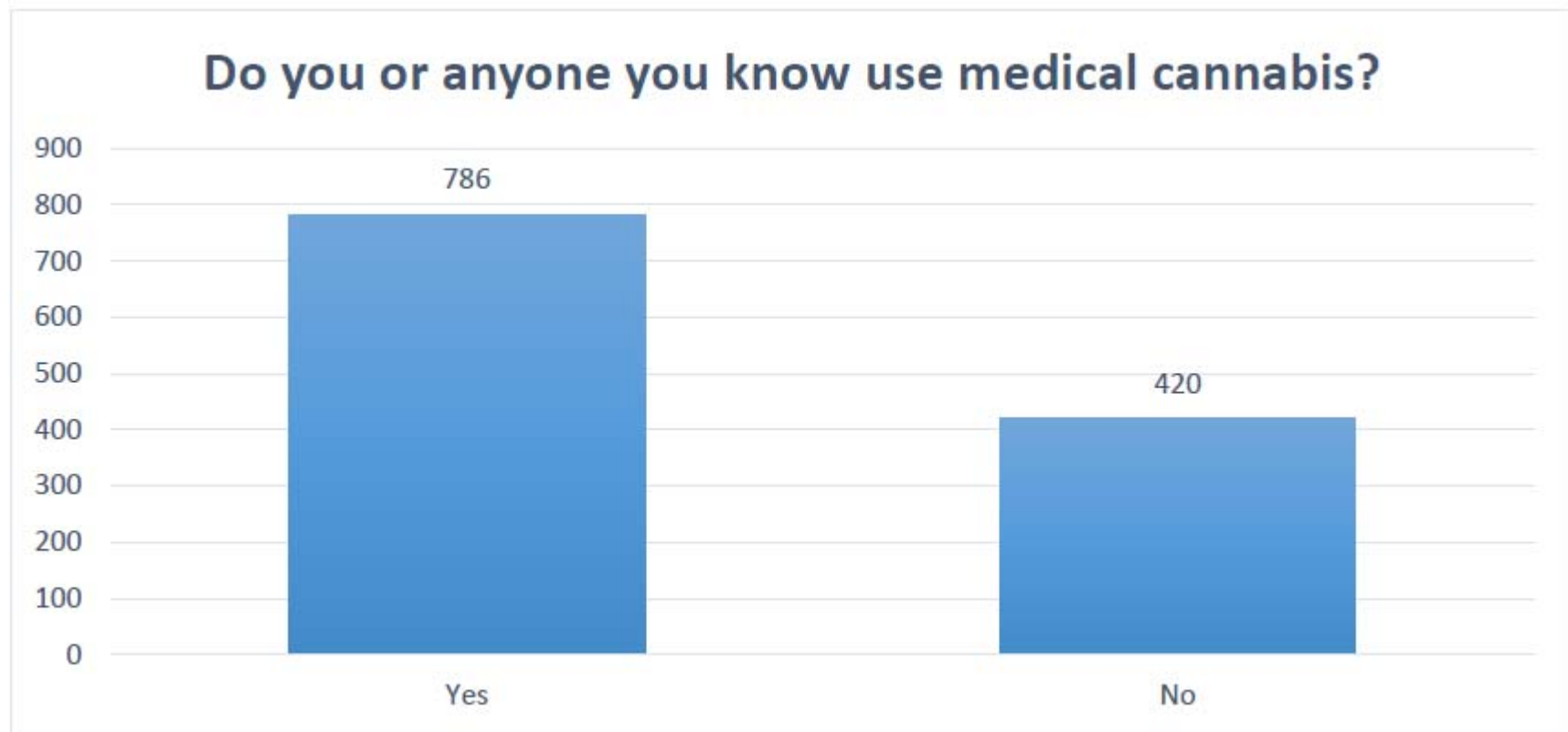
Online Survey Results



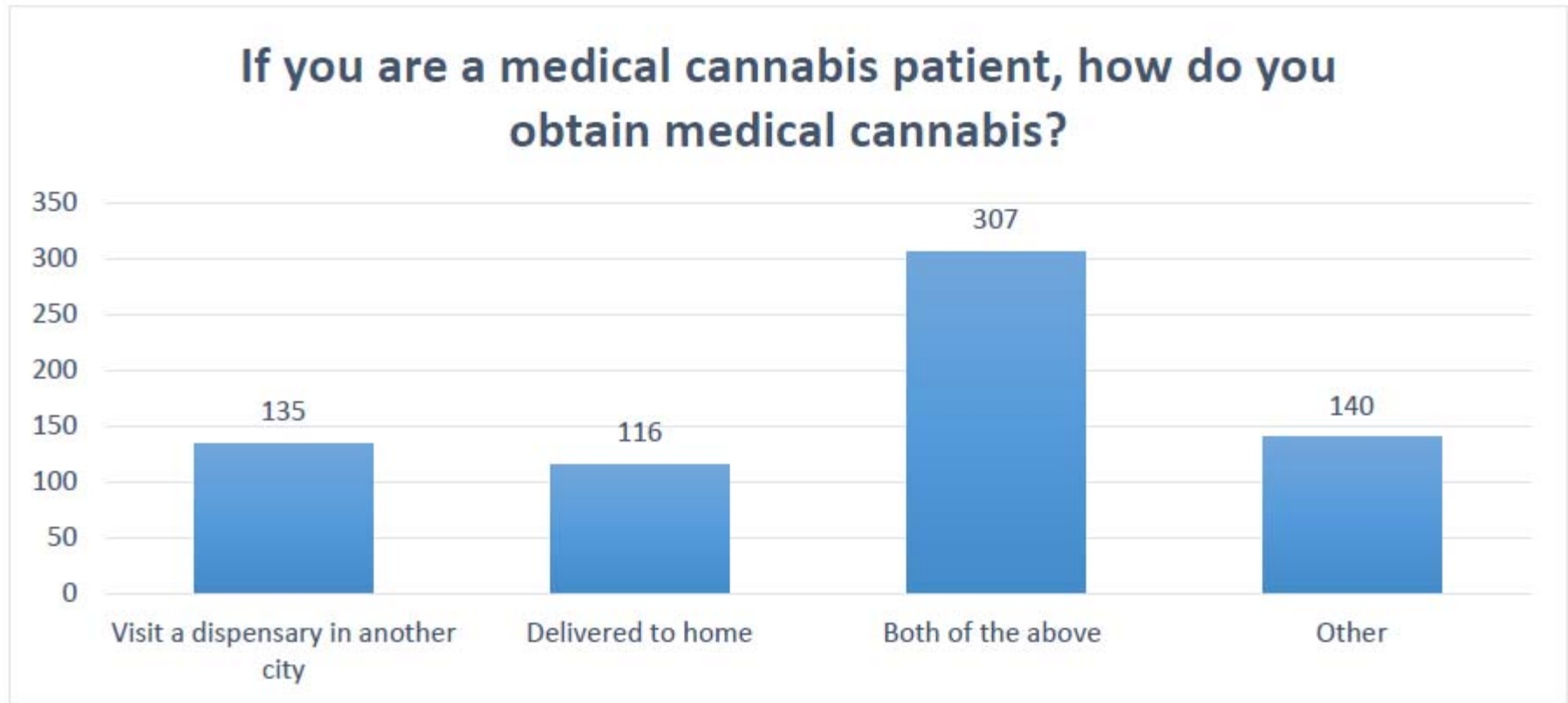
Online Survey Results



Online Survey Results



Online Survey Results

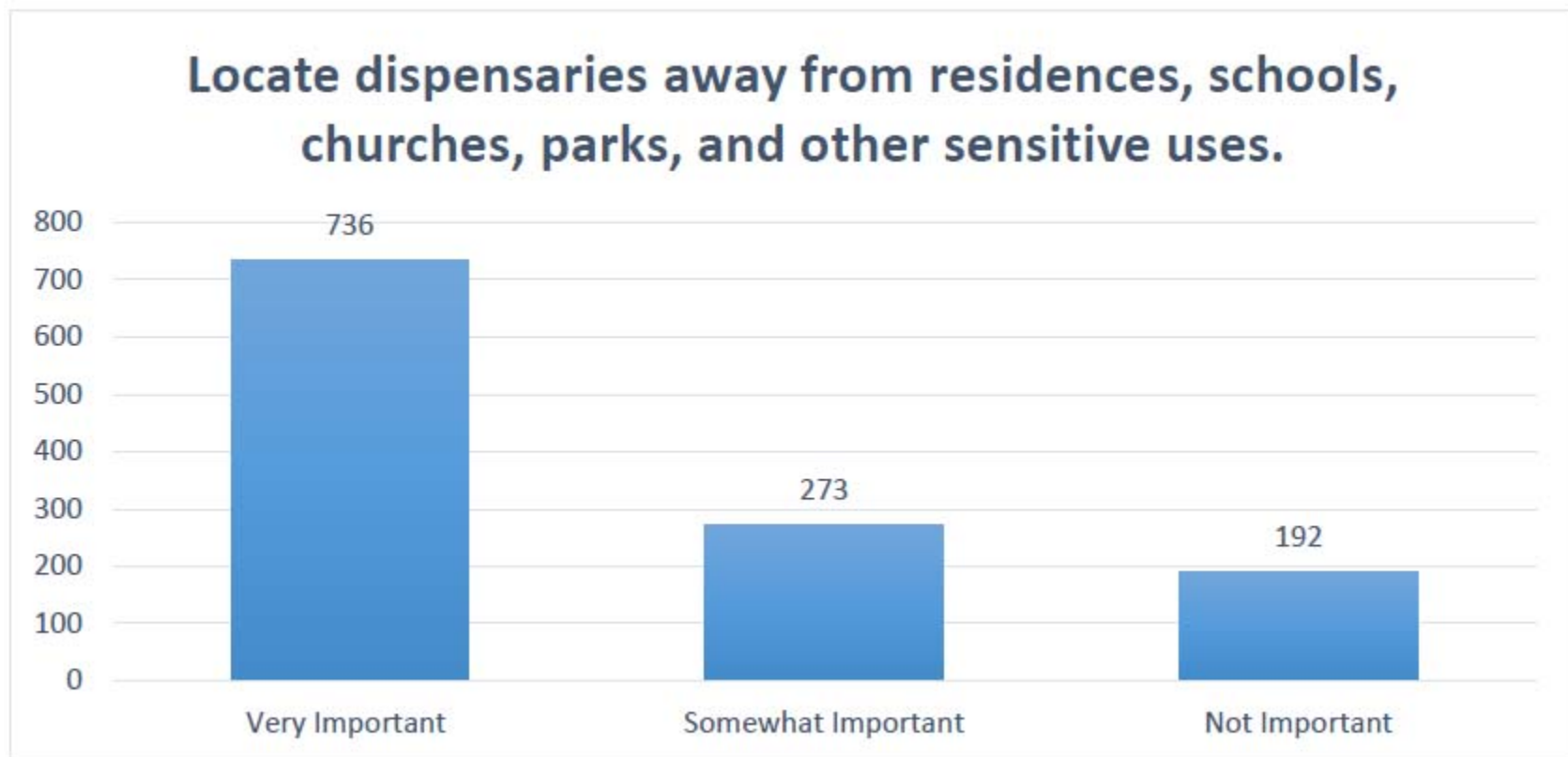


Online Survey Results



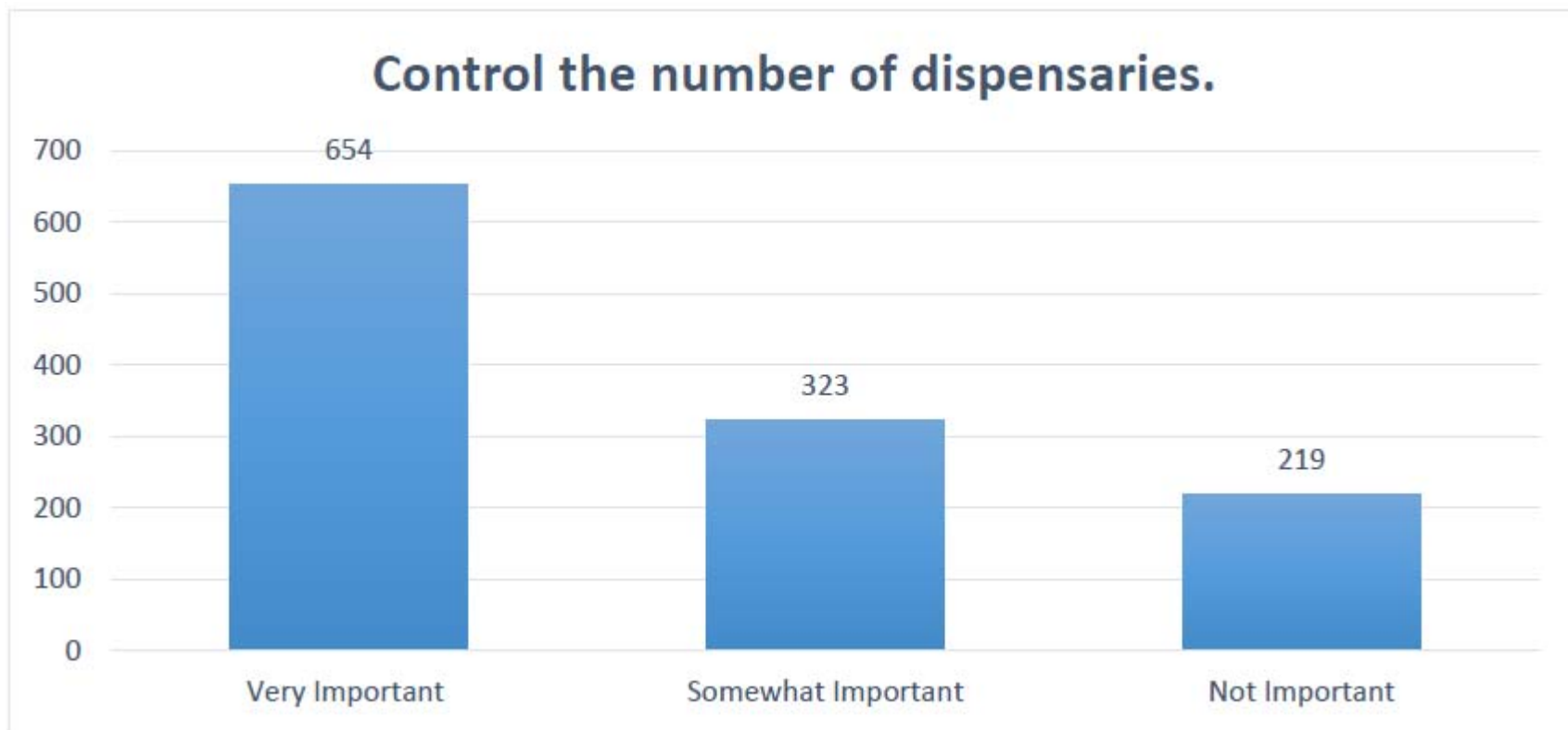
Online Survey Results

If the City of Livermore were to develop regulations to permit medical cannabis dispensaries, how important is each of the following regulations to you:



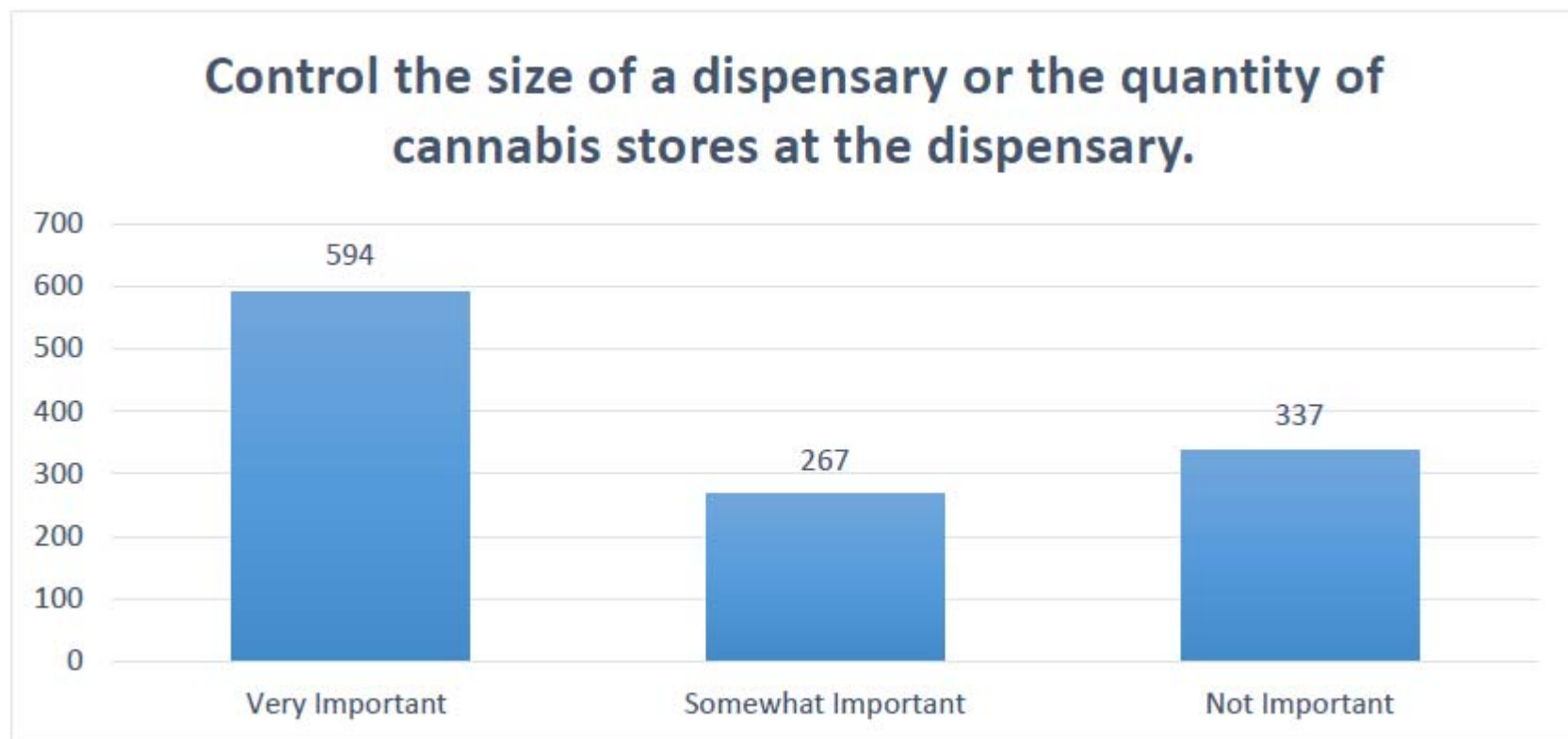
Online Survey Results

If the City of Livermore were to develop regulations to permit medical cannabis dispensaries, how important is each of the following regulations to you:



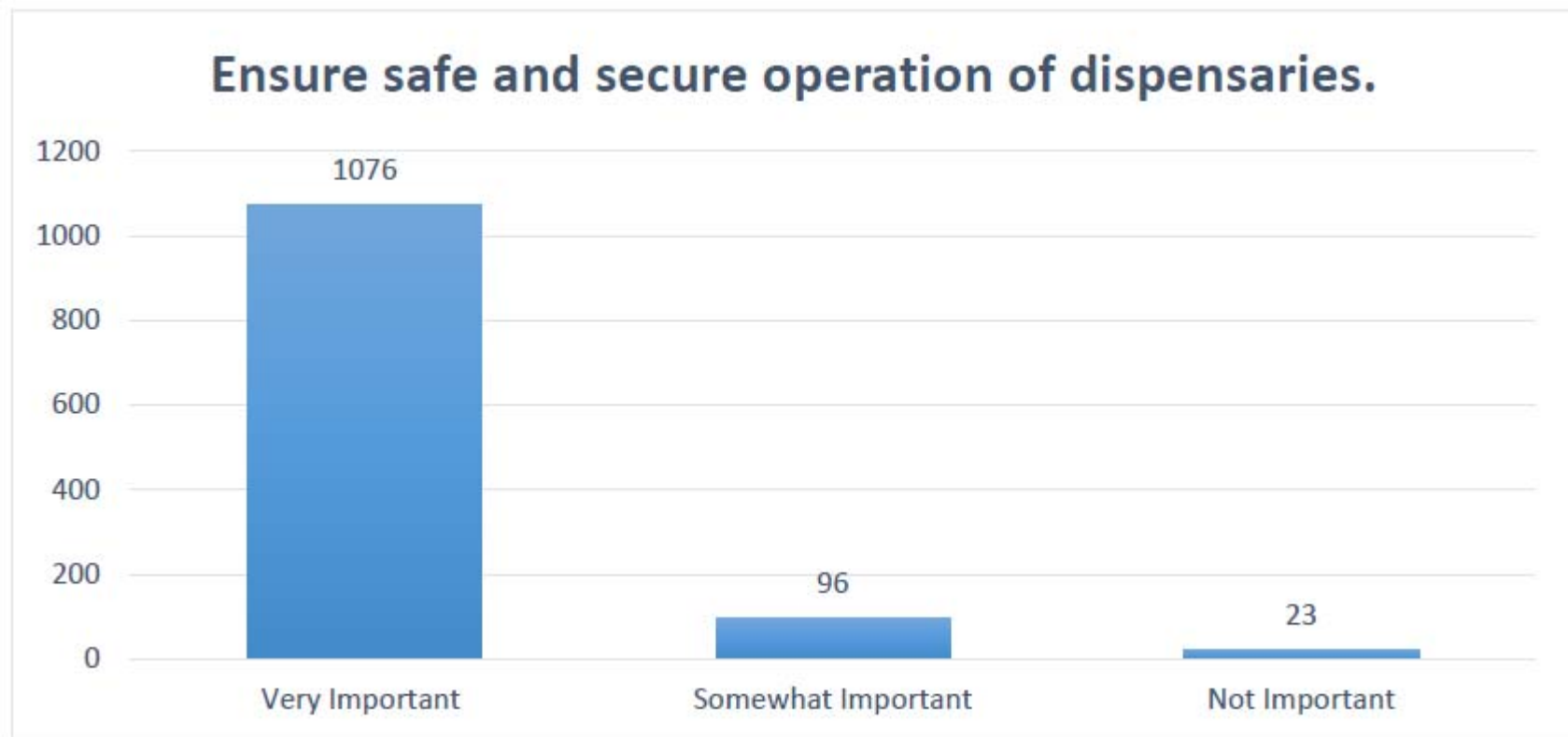
Online Survey Results

If the City of Livermore were to develop regulations to permit medical cannabis dispensaries, how important is each of the following regulations to you:

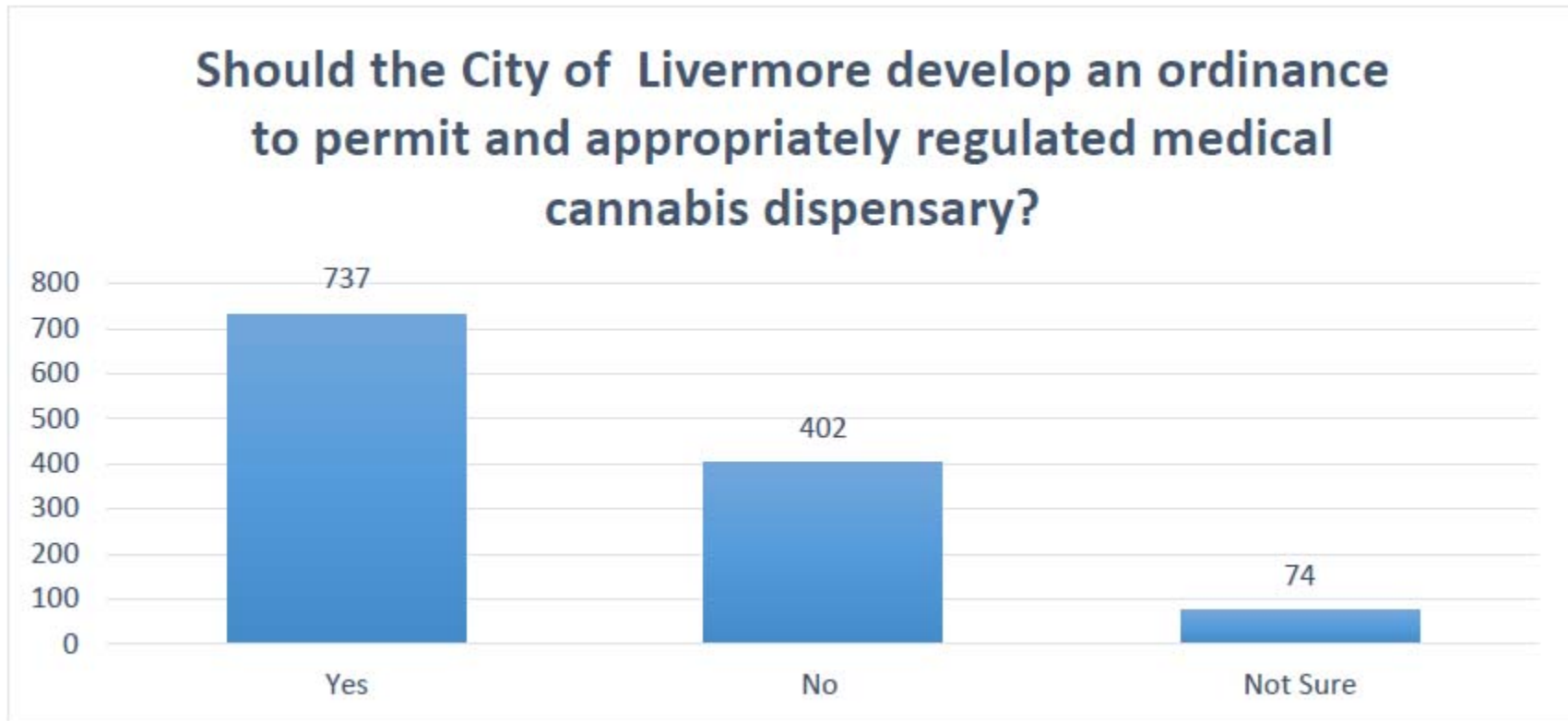


Online Survey Results

If the City of Livermore were to develop regulations to permit medical cannabis dispensaries, how important is each of the following regulations to you:



Online Survey Results



ROUNDTABLE DISCUSSIONS

What are your concerns?

Can those concerns be addressed
through regulations?

Count of group members who
support, oppose or are undecided

Interactive Board #1

Should the City of Livermore develop an ordinance to permit an appropriately regulated medical cannabis dispensary?

Please place one (1) sticker on your choice.

Yes

No

Not Sure

Interactive Board #2

How many dispensaries should the City allow?

Please place one (1) sticker on your choice.

None	1	2	3+

Interactive Board #3

If Alameda County approves a medical cannabis dispensary near Livermore, should the City continue its efforts to allow a dispensary?

Please place one (1) sticker on your choice.

Yes

No

Not Sure

Interactive Board #4

Should the City of Livermore regulate the hours of operation for a medical cannabis dispensary?

Please place one (1) sticker on your choice.

Yes

No

Interactive Board #5

Should the City of Livermore allow medical cannabis delivery services from a Livermore-based dispensary?

Please place one (1) sticker on your choice.

Yes

Yes, but only to
Livermore residents

No

Interactive Board #6

Should the City of Livermore control the size of the dispensary and/or the amount of cannabis inventory?

Please place one (1) sticker on your choice.

Yes

No

Not Sure

Interactive Board #7

Should the City apply a fee to the dispensary to cover police and additional support services?

Please place one (1) sticker on your choice.

Yes

No

Not Sure

Interactive Board #8

Additional comments?

Please write comments directly on this board.

Questions?